



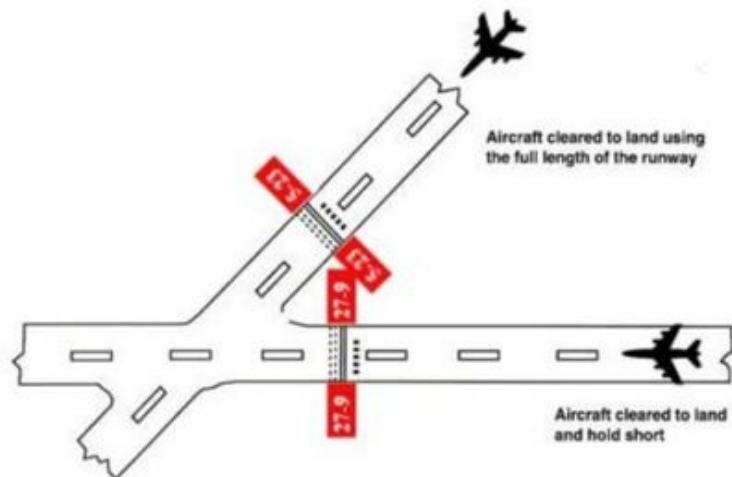
SATPALDA GEOSPATIAL SERVICES



Strategic Advanced Technology Products and Linkages Development Agency (SATPALDA) is an ISO 9001: 2015 certified company and a leading provider of satellite imagery and geospatial services to the user community. Established in 2002, SATPALDA has successfully completed a wide range of photogrammetric and remote sensing projects.

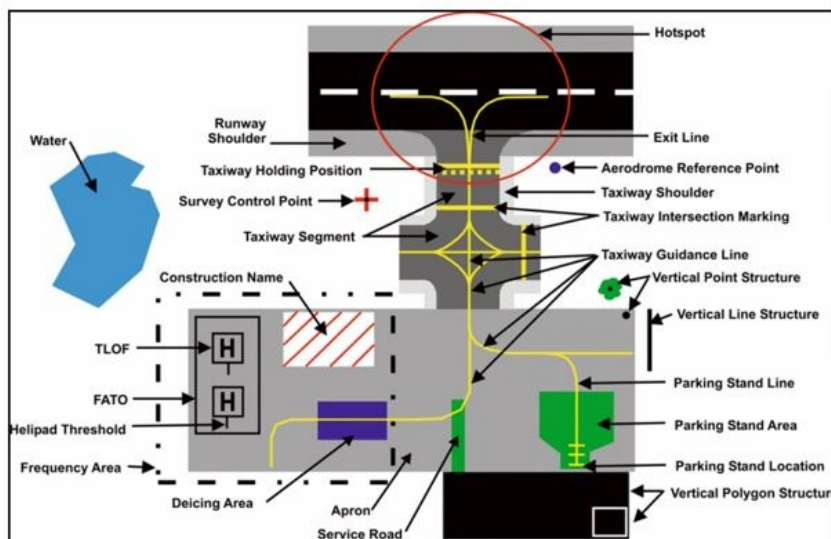
[Read More](#)

Aerodrome Mapping Database



Satpalda produces an AMDB that includes 21 distinct extracted feature sets of AMDB. AMDB is a spatial database of an airport, which

has multipurpose use. The primary use of AMDB is in Low visibility, as meteorological conditions deteriorate visibility, it may then become necessary to establish low visibility procedures on the airfield. AMDBs are produced and exchanged as datasets using global standards and tools of mainstream Geographic Information System (GIS) technology.



Advantages of AMDB:

The main advantages of this database are:-

- It is highly accurate and gives a detailed map of aerodrome features. AMDB contains elevation data of the local terrain and obstacles and also provides crucial information for airport planning activities.
- AMDB gives benefits to pilots, controllers, aerodrome managers, and aerodrome security.
- It is used in EFBs which are electronic flight bags. These applications are important to improve the users' situational awareness or supplement surface navigation.

Some 3D Applications:

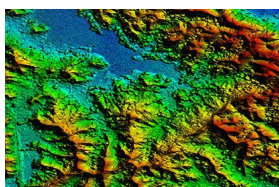
- Taxi routing functions
- Visualize runway closures
- Electronic Flight Bags (EFBs)
- Parking stands



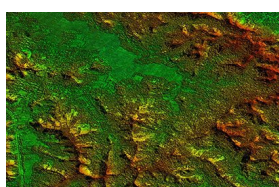
Pilot using AMDB in Electronic flight bag

For more info about AMDB product

Other Products of SATPALDA



DTM



DSM



3D Building

Digital Terrain Model (DTM) is a bare earth model that is generated using stereo pair of imageries. Such models become an integral part of topographic surveys. These models are also used to generate contour maps.

Digital Surface Model (DSM) represents the elevations of the reflective surfaces of trees, buildings, and other features elevated above the "Bare Earth". It represents the earth's surface and includes all objects on it.

3D building provides a detailed visual representation of the built environment and provides analysis and interpretation of urban landscape on an unprecedented level.

SATPALDA is a leading provider of geospatial products and services. The company is also a reseller of multiple satellite data products and has a proven track record of delivering project-critical geospatial products, including satellite imagery, UAV imagery, 3d models, elevation models, GIS, LULC maps, planimetry, terrain solutions and many more.

To know more about our 3D products :

Visit our Website

SATPALDA Geospatial Services
CP 2156, First Floor, Sector 16A,
Vasundhara, Ghaziabad-201012,
Uttar Pradesh, India
info@satpalda.com
Ph: +91-11-23325000, +91-120-4135000



© 2021 Satpalda Geospatial Services

This email was sent to {{contact.EMAIL}}
You've received it because you've subscribed to our newsletter.

[Unsubscribe](#)

