



**Happy 20th anniversary to Team SATPALDA and all our associates.**

As SATPALDA turns 20, it is not just a celebration of our success. It's a celebration of the trust-based relationships we've built over the years with customers, partners, employees and the communities we serve.

We would like to express our gratitude for being such an integral part of the SATPALDA journey and look forward to your continued support in the years ahead. This journey has been special because you have been a part of it and we value your patronage and appreciate your confidence in us. The future holds exciting opportunities and challenges and we reaffirm our commitment to geospatial excellence in the years ahead.



## Established in 2002

We started our journey, 20 years back as a satellite imagery provider



Now we are established as a full-fledged GIS company.

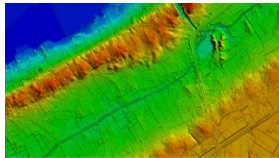
SATPALDA has completed a wide range of photogrammetric and Remote Sensing Projects. Our cost-effective solutions cater to the

broad spectrum of Government and Private Users.

## Our Products & Services

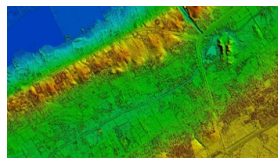
SATPALDA is a leading provider of geospatial products and services. The company is a reseller of multiple satellite data products and has a proven track record of delivering project-critical geospatial products, including satellite imagery, UAV imagery, 3d models, elevation models, GIS, LULC maps, planimetry, terrain solutions and many more.

### 3D Landscape



**DTM**

Digital Terrain Model (DTM) is a bare earth model that is generated using stereo pair of imageries. Such models become an integral part of topographic surveys. These models are also used to generate contour maps.



**DSM**

Digital Surface Model (DSM) represents the elevations of the reflective surfaces of trees, buildings, and other features elevated above the "Bare Earth". It represents the earth's surface and includes all objects on it.



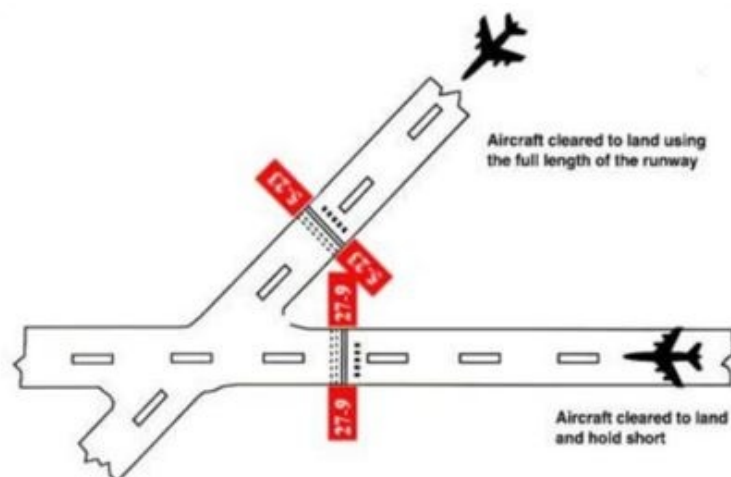
**3D Building**

3D building provides a detailed visual representation of the built environment and provides analysis and interpretation of urban landscape on an unprecedented level.

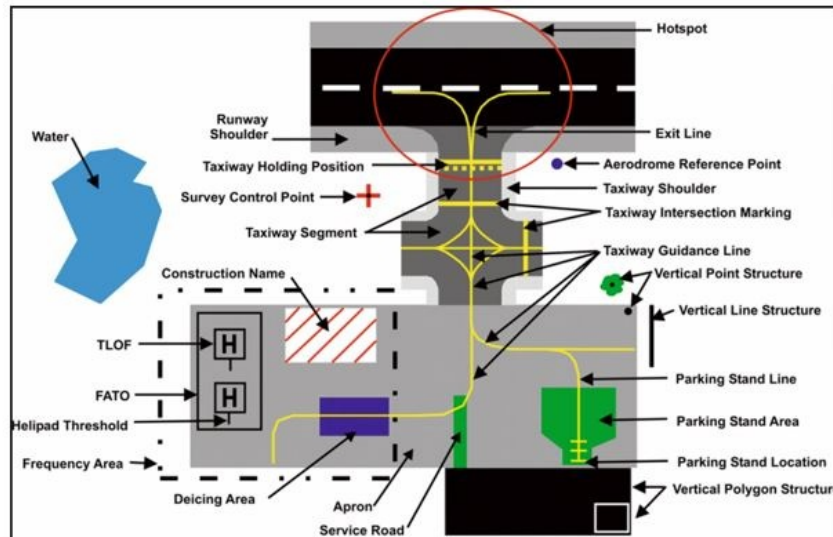
**To know more about our 3D products :**

[Visit our Website](#)

### Aerodrome Mapping Database



Satpalda produces an AMDB that includes 21 distinct extracted feature sets of AMDB. AMDB is a spatial database of an airport, which has multipurpose use. The primary use of AMDB is in Low visibility, as meteorological conditions deteriorate visibility, it may then become necessary to establish low visibility procedures on the airfield. AMDBs are produced and exchanged as datasets using global standards and tools of mainstream Geographic Information System (GIS) technology.



### Some 3D Applications:

- Taxi routing functions
- Visualize runway closures
- Electronic Flight Bags (EFBs)
- Parking stands



*Pilot using AMDB in Electronic flight bag*

**To know more about our AMDB products :**

**Visit our Website**

The USP of SATPALDA's services is the unique blend of experience and cost-effectiveness. Even when times have been tough, our company's founding values stayed true and forged ahead to create new success and continually honor the trust that customers placed within us.

**Services Provided by**  
**SATPALDA**



- ORTHORECTIFICATION
- AERIAL TRIANGULATION
- TERRAIN MODELING(DTM)
- 3D MODELLING
- WEB GIS
- LIDAR
- TOPOGRAPHIC MAPPING
- LAND COVER MAPPING
- SPECIALIZED PROCESSES
- SOFTWARE

## Industries we Serve



## SATPALDA Geospatial Services

Twenty years of rich experience and expertise, Strategic Advanced Technology Products and Linkages Development Agency (SATPALDA) is a leading brand in the Geospatial as well as IT / Engineering Services and a certified provider of various remote sensing solutions. The company has a team of experts with thousands of man hours of production experience in mapping, photogrammetry, planimetry and IT development services and has successfully executed many projects globally.

**To know more about our Products & Services:**

[Visit our Website](#)



## SATPALDA Geospatial Services

CP 2156, First Floor, Sector 16A,  
Vasundhara, Ghaziabad-201012, Uttar  
Pradesh, India

[info@satpalda.com](mailto:info@satpalda.com)

Ph: +91-11-23325000, +91-120-  
4135000



© 2021 Satpalda Geospatial Services

This email was sent to {{contact.EMAIL}}  
You've received it because you've subscribed to our newsletter.

[Unsubscribe](#)

